



**Whipps Cross University
Hospital
BARTSHEALTH NHS
Trust**



Whipps Cross University Hospital BARTSHEALTH NHS Trust

North East Thames Foundation School Open Day
March 2013

Amina Begum
Foundation Year Administrator

Vaishali Joshi
Undergraduate Administrator

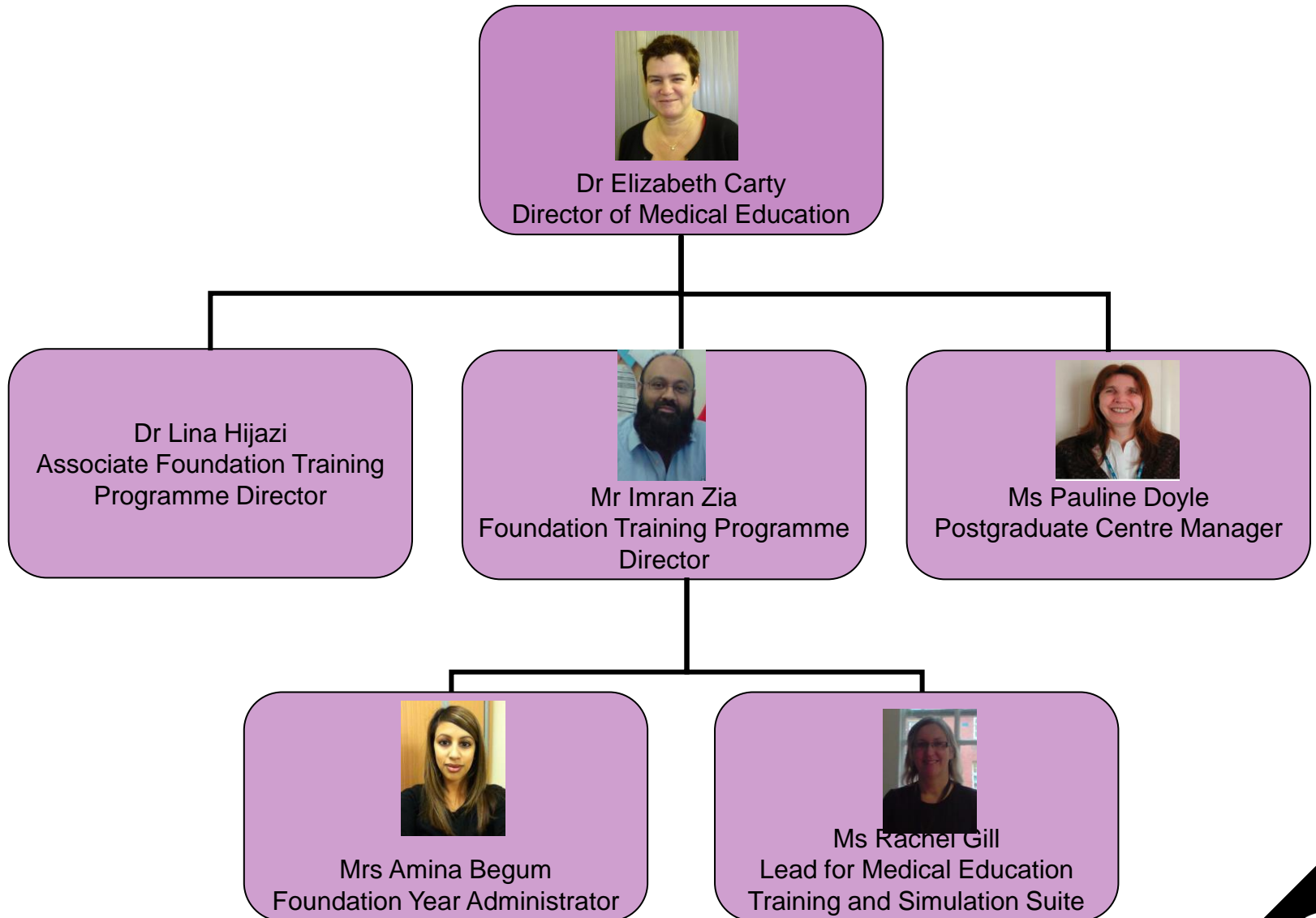
Rachel Gill
Lead for Medical Education Training and Simulation Suite



- **Good transport links to London**
- **Excellent teaching and facilities**
- **Friendly approachable consultants and education staff**
- **Excellent Clinical and Educational Supervision**
- **Full introductory Preparation week**
- **Everything you need!!!**



The Team



You Say...We Do

Can we have our own dedicated Clinical Skills teaching sessions

Thursdays: 2 - 3pm FY2 Session
3 - 4pm FY1 Session

Doctors Mess in urgent need of upgrade

Upgrade now complete

Can we have information regarding our next rotation

Handover booklets for each individual specialty ready for collection by FY doctors

Can we have an FY Representative who can bring questions and issues to all Educational Meetings?

An election was set up. FY doctors have chosen their own reps to bring forward their views and ideas.



Your Opportunities

Enthusiastic...

... For You to
Become the
Facilitator!

... Plenty of
Teaching
Opportunities...

...Ambitious...



Medical Education Training Suite

Simulation

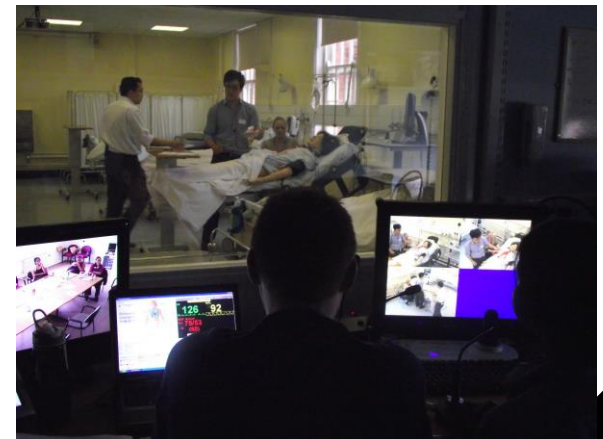
Debrief



Set Up



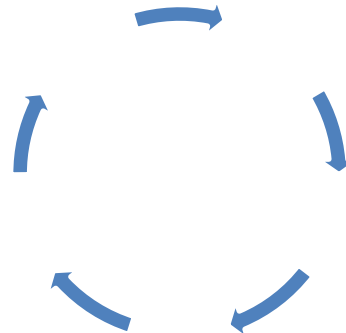
Scenario



Scenario is being watched live



Scenario is recorded from Mission Control



Medical Education Training Suite

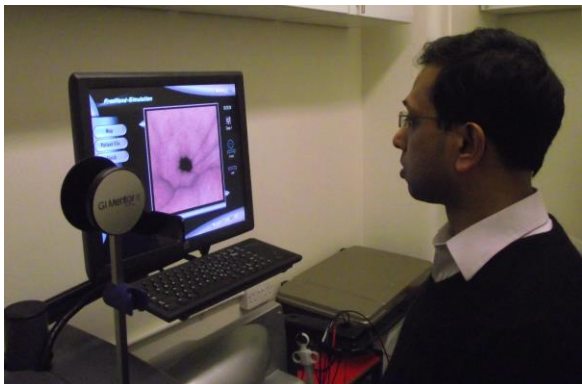
MET Suite wins award for Most Productive Education Training Facilities in London



Transvaginal Ultrasound Trainer



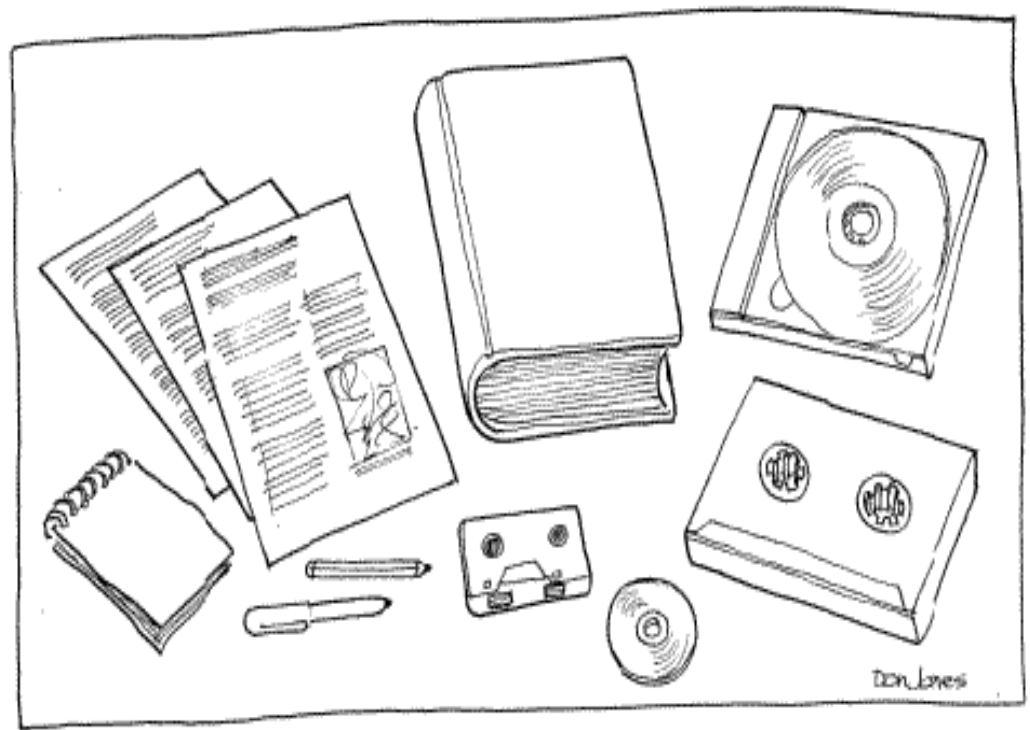
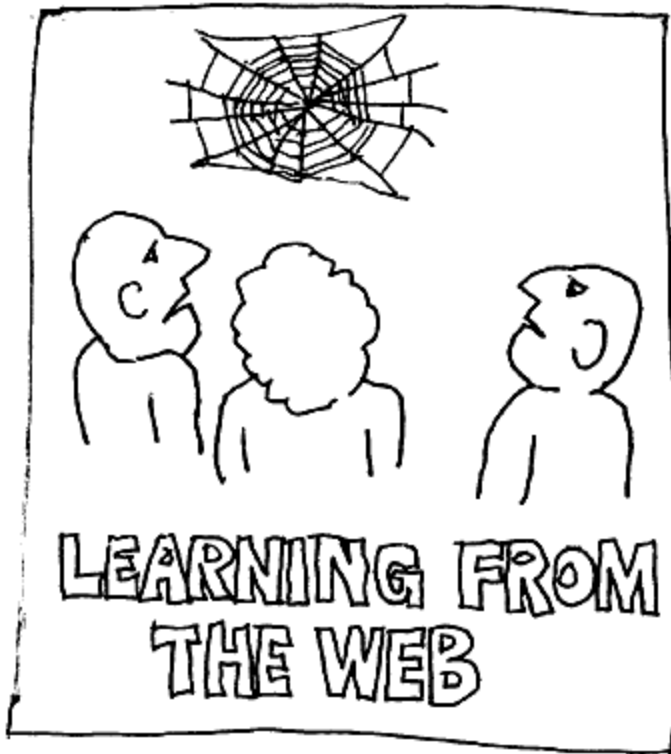
Surgical Simulation Lab
- Simbionix GI Mentor Simulator



Laparoscopy Box



Other Facilities



Learning is guided using a range of selected paper and electronic materials



Any Questions?

**Please come and visit us at
the Whipps Cross University
Hospital
Stand**

